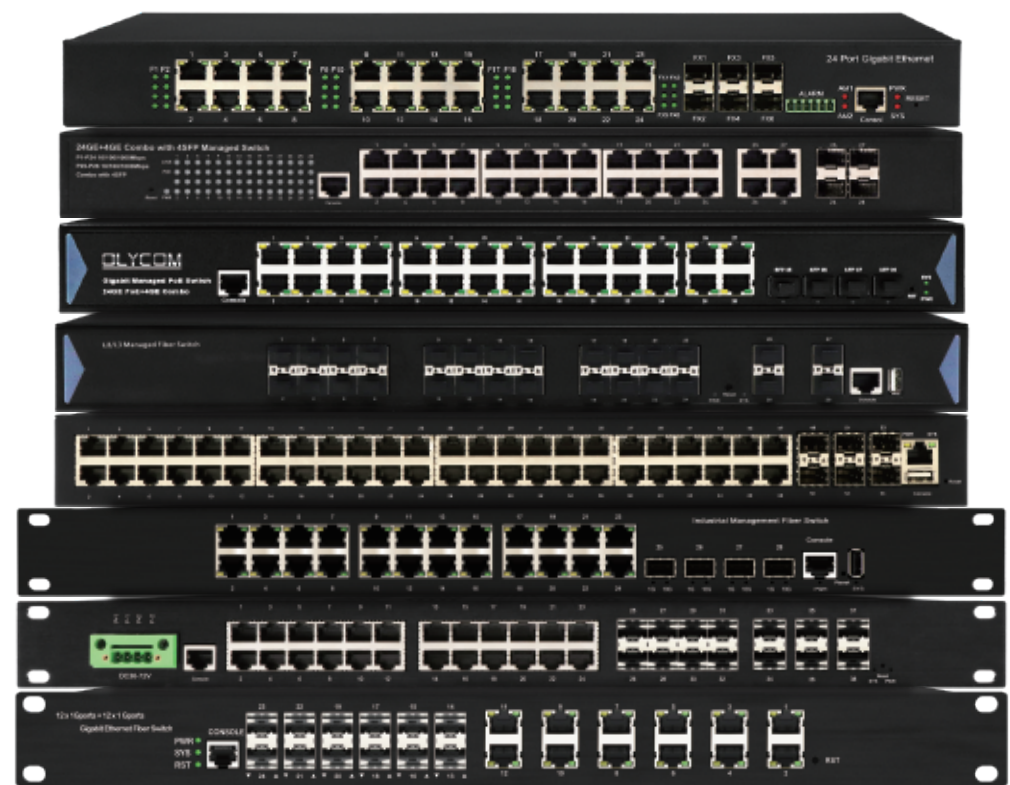


### Managed Fiber Switch



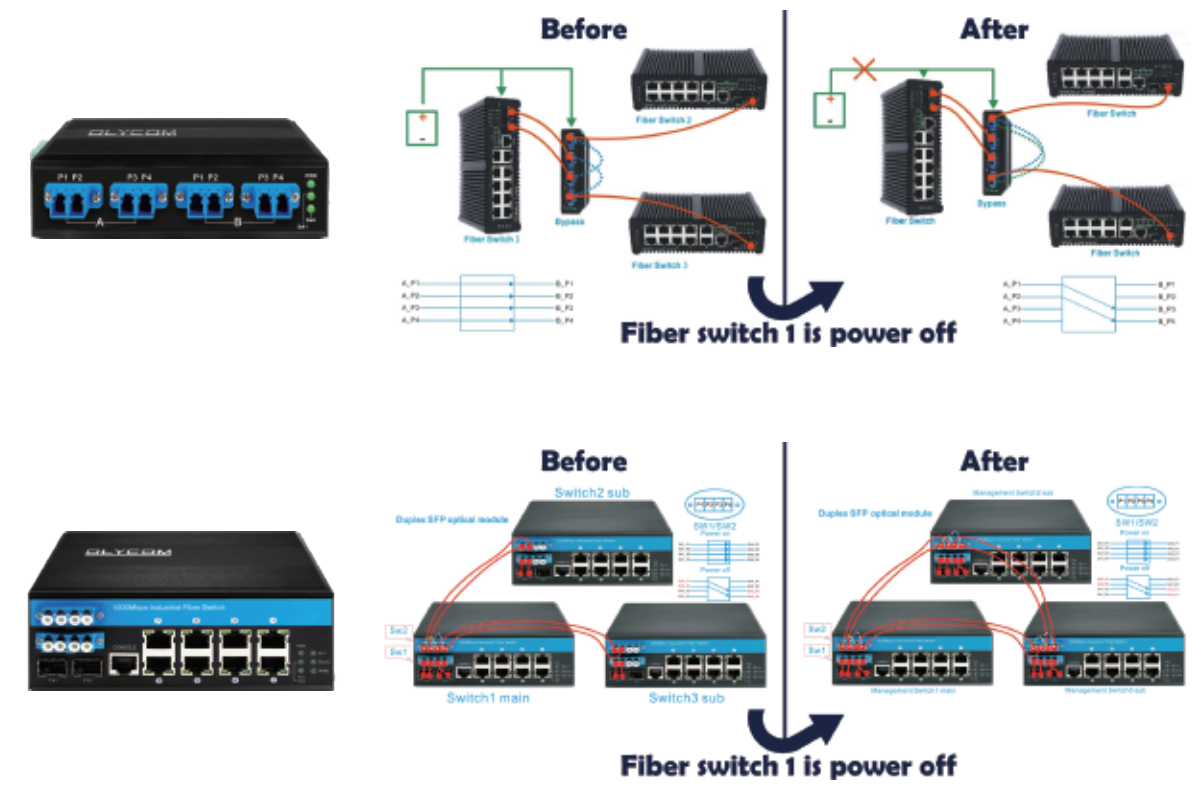
- Full Gigabit Ethernet Auto-sensing network ports(1-24ports)
- Flexible 100M/1000M/10G fiber port, available for multi ports (1-28ports)
- Support POE Standard AF/AT/BT (15.4W/30W/60W), total power is 340W max
- Redundant input power 110V-240VAC
- Cable diagnostic, Measuring cable normal or broken point distance
- IP30 protection degree and EMC industrial grade
- STP, RSTP, MSTP, ITU-T G.8032 Ethernet Ring Protection Switching (ERPS) for redundant cabling
- Supports Green Ethernet IEEE802.3az EEE (Energy Efficient Ethernet) management to optimize the power consumption
- DHCP Server/Client/Relay/Snooping/Snooping option 82/Relay option 82
- QoS, Traffic classification QoS, CoS, bandwidth control for Ingress and Egress, Storm Control, DiffServ
- IEEE802.1q VLAN, MAC based VLAN, IP subnet based VLAN, Protocol based VLAN, VLAN translation, GVRP, MVR
- Dynamic IEEE 802.3ad LACP Link Aggregation, Static Link Aggregation
- IGMP snooping V1/V2/V3, IGMP Filtering/ Throttling, IGMP query, IGMP proxy reporting, MLD snooping V1/V2
- Security : Port based and MAC based IEEE802.1X, RADIUS, ACL, TACACS+, HTTP/HTTPS, SSL/SSH v2
- Software upgrade via TFTP and HTTP, redundant firmware to avoid in case of upgrade failure
- Supports IEEE1588 PTP V2 for precise time synchronization to operate in Ordinary-Boundary, Peer to Peer Transparent Clock, End to End Transparent Clock, Master, Slave mode by each port
- RMON, MIB II, Port mirroring, Event syslog, DNS, NTP, IEEE802.1ab LLDP
- Supports IPv6 Telnet server /ICMP v6
- CLI, Web based management, SNMP v1/v2c/v3, Telnet server for management

### POE Switch



- Full Gigabit Ethernet Auto-sensing network ports(4-24ports)
- Flexible 1000Mbps fiber port, available for multi ports (1-4ports)
- Support IEEE802.3af/at
- Support restrain network storm, VLAN function
- Support Max Transmission distance up to 250m
- All port supported by MDI/ MDIX auto flip and self-negotiation
- Built-in power supply
- Maximum power of single PoE port : 30 W
- Support lightning protection 4kV
- Adopts store-and-forward architecture
- Fan-less, natural cooling, small,compact and quiet design,suitable for desktop or wall

### Industrial Bypass



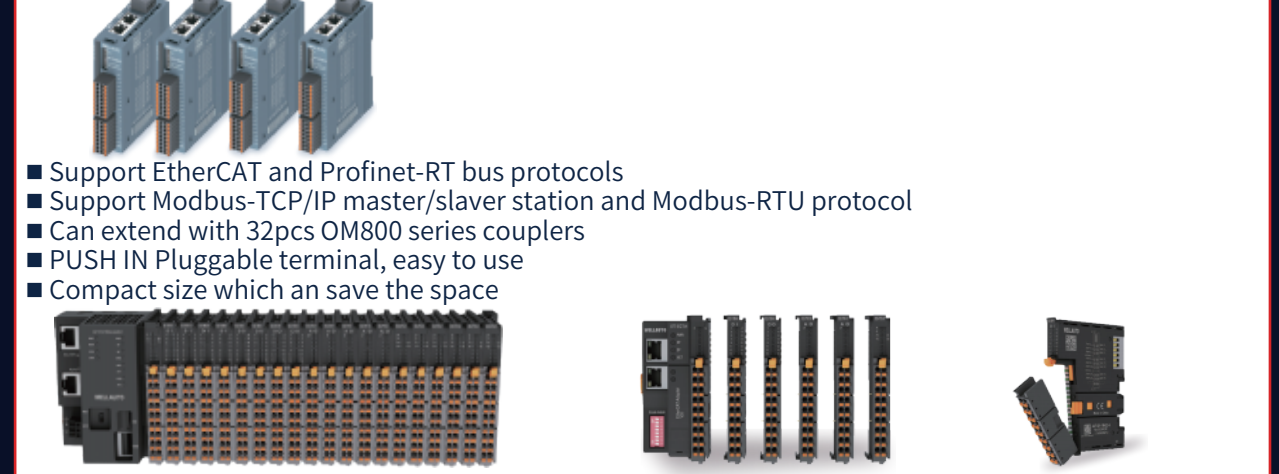
Product Name	Fiber Bypass
Power Interface	Standard industrial terminal block
Polarity Protection	Support
Optical Fiber interface	LC
Wavelength Range	850±40/1300±40nm; 1260~1650nm
Test Wavelength	850/1300nm; 1310/1550nm
Insert Loss	Typ:0.6 dB Max:1.0 dB ; Typ:0.6dB Max:1.0 dB
Return Loss	MM≥30 dB SM≥50 dB
Channel Crosstalk	MM≥35 dB SM≥55 dB
Polarization Loss	≤0.05 dB
Wavelength Loss	≤0.05 dB
Temperature Loss	≤0.05 dB
Repeatability	≤0.05 dB
Operating Voltage	3.3V-5V
Service Life	≥100000000 times
Switching Time	≤10 ms
Transmission Optical Power	≤500 mw
Environment	Working temperature: -20°C~40°C Storage temperature: -40°C~85°C

- The fiber bypass has the characteristics of low loss, high stability and high reliability.
- For different optical path needs, optical switch modules can be customized to meet the optical path needs of complex test systems and improve product test efficiency.
- It is an indispensable core product for the monitoring and protection of optical communication system, which can be connected to high-density optical communication systems.

### Standalone and Card PLC I/O Series



- Standalone distributed sites that support four major bus protocols: EtherCAT and Pro inet RT, EtherNet/IP, CC Link IEF Basic
- 16DI+16DO, 32DI, 32DO, NPN and PNP options
- High precision analog module, flexible selection of multiple specifications
- Supports configurable IO points (16 fixed+16 configurable)
- Using spring type press terminals to achieve fast wiring
- Terminals can be plugged and unplugged, replacing modules does not require rewiring, saving time and effort



<b>OM877-ECT-H coupler</b> <ul style="list-style-type: none"> <li>Support ring network redundancy</li> <li>Support network hot connection</li> <li>Support DIP switch to set station address</li> <li>Expandable 32 IO modules(992DI/992DO/128AI/128AO)</li> <li>Support D-Code aviation plug connector</li> <li>Module information can be set/queried through CoE</li> </ul>	<b>OM877-P NT-H Coupler</b> <ul style="list-style-type: none"> <li>Support RT,ring network redundancy</li> <li>Support network hot connection</li> <li>Has reset button</li> <li>Expandable 32 IO modules (992DI/992DO/128AI/128AO)</li> <li>Support D-Code aviation plug connector</li> </ul>
<b>OM863-1AA-H Couple</b> <ul style="list-style-type: none"> <li>Support ring network redundancy</li> <li>Support network hot connection</li> <li>Support DIP switch to set station address</li> <li>Expandable 32 IO modules(992DI/992DO/128AI/128AO)</li> <li>Support D-Code aviation plug connector</li> <li>Module information can be set/queried through CoE</li> </ul>	<b>OM861-MBS-H Coupler</b> <ul style="list-style-type: none"> <li>Support dial to set serial specification</li> <li>Supportnetwork hot connection</li> <li>Expandable 32 IO modules (992DI/992DO/128AI/128AO)</li> </ul>
<b>OM877-CCL-H Coupler</b> <ul style="list-style-type: none"> <li>Support ring network redundancy</li> <li>Support network hot connection</li> <li>Support DIP switch to set station address</li> <li>Expandable 32 IO modules(992DI/992DO/128AI/128AO)</li> <li>Support D-Code aviation plug connector</li> <li>Module information can be set/queried through CoE</li> </ul>	<b>OM877-CL2-H Coupler</b> <ul style="list-style-type: none"> <li>Support dial to set serial specification</li> <li>Support network hot connection</li> <li>Expandable 16 IO modules (224DI/224DO/32AI/29AO)</li> <li>The number of stations can be flexibly set</li> </ul>
<b>OM877-E IP-H Coupler</b> <ul style="list-style-type: none"> <li>Support dial or web page to set ID address</li> <li>Support network hot connection</li> <li>Expandable 32 IO modules(992DI/992DO/128AI/128AO)</li> <li>The output status of the expansion module can be set when the master station is in STOP state</li> <li>Has reset button</li> </ul>	<b>OM877-1 DP-H Coupler</b> <ul style="list-style-type: none"> <li>DB9 interface, adaptive rate</li> <li>Support network hot connection</li> <li>Expandable 32 IO modules (992DI/992DO/128AI/128AO)</li> </ul>



SHENZHEN OLYCOM TECHNOLOGY CO., LTD.

Shenzhen Olycom Technology Co., Ltd.

Website: [www.olycom.com.cn](http://www.olycom.com.cn)

Mail: [sales@olycom.com.cn](mailto:sales@olycom.com.cn)

ADD: 4/F, 2-3 Building, Tongfuyu Industrial Zone, Aiqun Rd, Shiyan, Baoan District, Shenzhen, China, 518000

